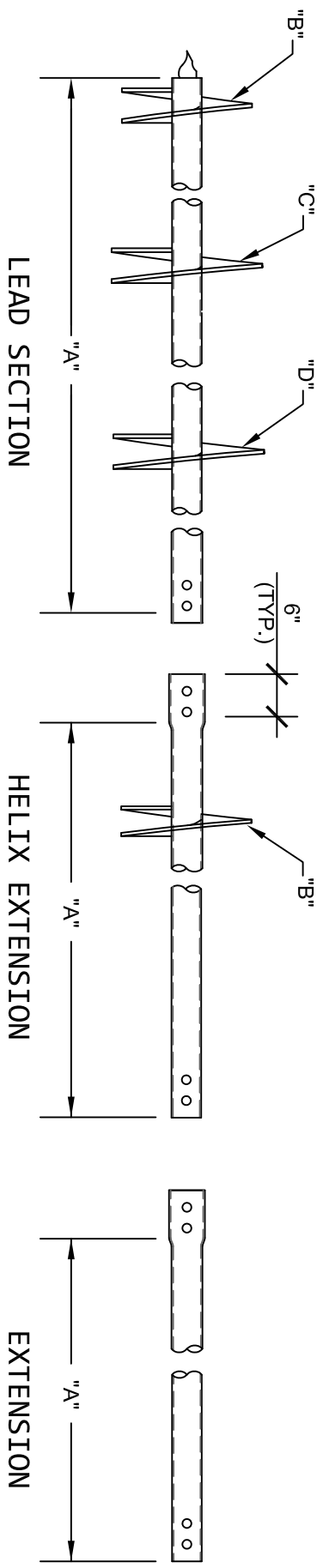


2.375" Ø HELICAL PILES AND ANCHORS - UPSET CONNECTION



LEAD SECTION TABLE*

| CAT.# | "A" | "B" | "C" | "D" |
|-------|--------|-----|-----|-----|
| 6022 | 2'-0" | 8" | | |
| 6027 | 2'-0" | 10" | | |
| 6025 | 5'-0" | 8" | | |
| 6029 | 5'-0" | 10" | | |
| 6040 | 5'-0" | 8" | 10" | |
| 6042 | 5'-0" | 10" | 12" | |
| 6044 | 5'-0" | 12" | 14" | |
| 6041 | 7'-0" | 10" | 12" | |
| 6059 | 10'-0" | 10" | | |

HELIX EXTENSIONS

| CAT # | "A" | "B" |
|---------|-------|-----|
| 8505.10 | 5'-0" | 10" |
| 8507.10 | 7'-0" | 10" |

EXTENSIONS

| CAT # | "A" |
|-------|-------|
| 8502 | 2'-0" |
| 8505 | 5'-0" |
| 8507 | 7'-0" |

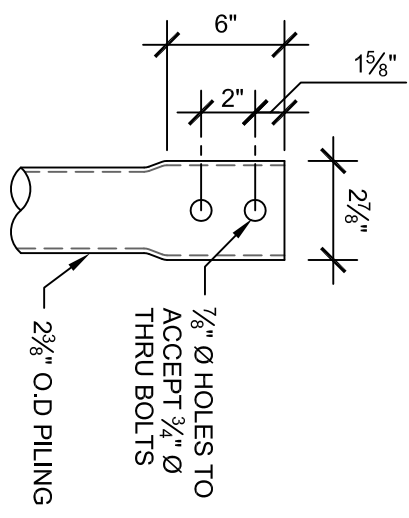
MECHANICAL TORQUE RATING - 3,000 FT-LB
ULTIMATE CAPACITY (TENS/COMP) - 30.0 KIP*
ALLOWABLE CAPACITY (TENS/COMP) - 15.0 KIP*
 *BASED ON A TORQUE FACTOR (Kt) = 10

* MULTIHELIX ARE SPACED 3 DIAMETERS OF THE LOWER HELIX.

NOTES:

1. POLYETHYLENE POLYMER THERMOPLASTIC COATING PER ICC-ES AC 228.
2. LEAD AND EXTENSION SECTION AND PILOT POINT LENGTHS ARE NOMINAL. PILOT POINTS ARE 3".
3. SHAFT MATERIAL IS 2 3/8" O.D., 0.190" WALL, MINIMUM Fy=65 KSI AND Fu=80 KSI.
4. HELIX BLADE MATERIAL IS HOT ROLLED, MINIMUM Fy=50 KSI AND Fu=80 KSI CARBON STEEL. PLATE THICKNESS IS AVAILABLE IN 3/8" AND 1/2" THICKNESSES.
5. CONNECTORS ARE NOMINAL 2 7/8" O.D., 0.190 WALL, MINIMUM Fy=65 KSI
6. NOMINAL SPACING BETWEEN HELICAL PLATES IS THREE TIMES THE DIAMETER OF THE LOWER HELIX.
7. MANUFACTURER TO HAVE IN EFFECT INDUSTRY RECOGNIZED WRITTEN QUALITY CONTROL FOR ALL MATERIALS AND MANUFACTURING PROCESSES.
8. ALL WELDING IS TO BE DONE BY WELDERS CERTIFIED UNDER SECTION 5 OF THE AWS CODE D1.1.
9. ALL COUPLING BOLTS TO BE 3/4" Ø, GRADE 8 BOLTS.

**CONNECTION
DETAIL**



| | | |
|----------------------|--------------------------|--------------|
| DWG. NO. : 2875.03 | CATALOG NO. : SEE TABLES | REV. 1 |
| SCALE : 3/4" = 1'-0" | DRAWN BY : SR | SHEET 1 OF 1 |
| | DATE: 02/28/14 | |